

Standalone Scheduler Deployment in Websphere
Oracle FLEXCUBE Universal Banking
Release 12.87.06.0.0
[May] [2020]

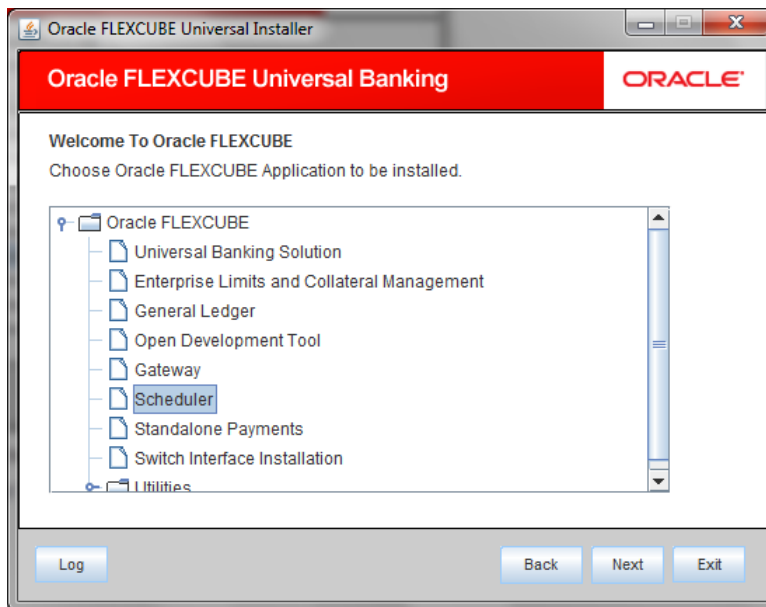


Table of Contents

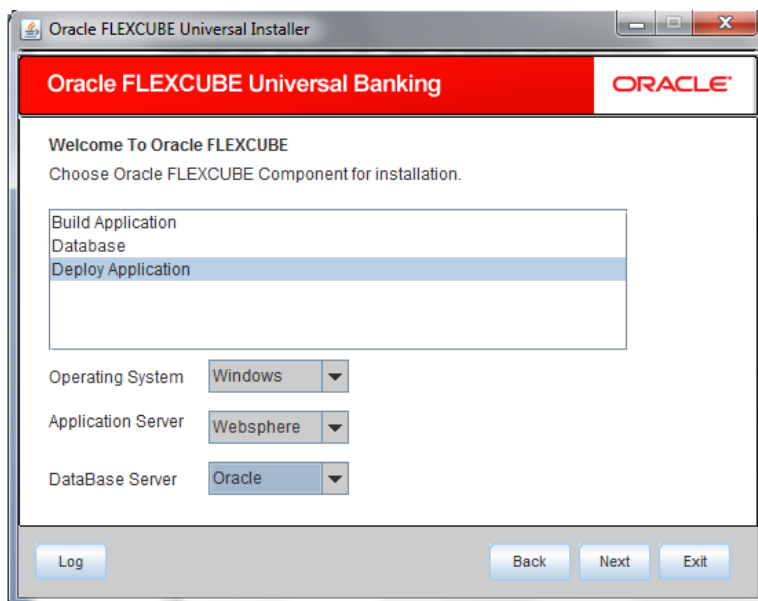
1. STANDALONE SCHEDULER FULL DEPLOYMENT.....	1-1
--	-----

1. Standalone Scheduler Full Deployment

1. Launch Oracle FLEXCUBE Universal Banking Solution Installer.
2. Click on 'Next' to display the screen below .



3. Select 'Scheduler'.
4. Click 'Next' to display the screen below.



5. Select 'Deploy Application'.

6. Specify the following details:

Operating System

Select the server's operating system in which you are installing the FCUBS application. Select the appropriate one from the adjoining drop-down list.

Application Server

Select 'Websphere' from the adjoining drop down list.

Database Server

Select the database server in which you are installing the FCUBS application. Select the appropriate one from the adjoining drop-down list.

SelectSelectWebsphere

7. Click on 'Next' to display the screen below.

Name	Value
Admin IP	Not Applicable
Admin Port	Not Applicable
Admin Username	websphere
Admin Password	*****

Test Connection

Type of Deployment: Full Deployment ▼

Log Back Next Exit

8. Specify the following details:

Admin IP

Not applicable.

Admin Port

Not applicable.

Admin UserName

Specify the appropriate admin username of the websphere application server.

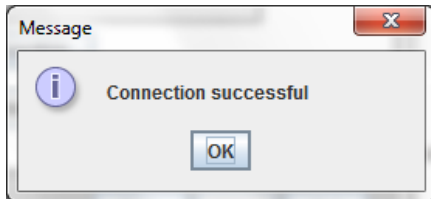
Admin Password

Specify the appropriate admin password of the websphere application server.

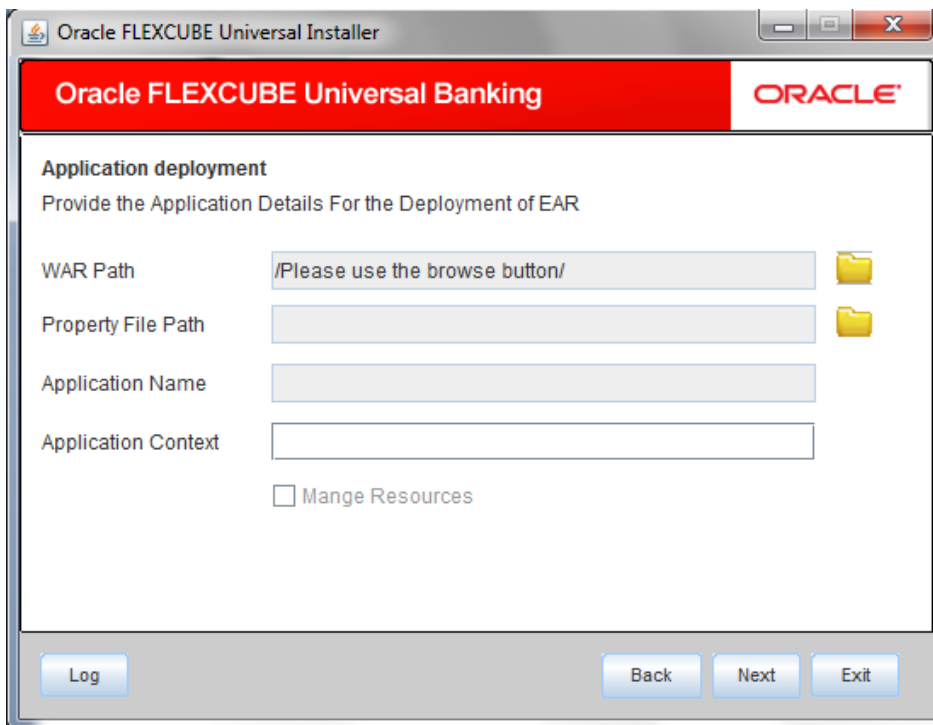
Type of Deployment

Select 'Full Deployment'.

- Click on 'Test Connection' to test the connection with the application server. On successful connection, the following message will be displayed.



- Click on 'OK' and click on 'Next' to display the screen below.



- Specify the following details:

WAR Path

Select the application WAR to be deployed using the browse button.



The Application WAR path cannot be copied and pasted on to the text box, thereby demanding the use of the browse button to select the WAR.

Property File Path

If the property file is internal to the application EAR, it gets displayed here on selection of EAR path. If the property file is external, specify the location. You can use the directory button to browser and select the directory..

Application Name

Application name gets displayed on selection of EAR path.

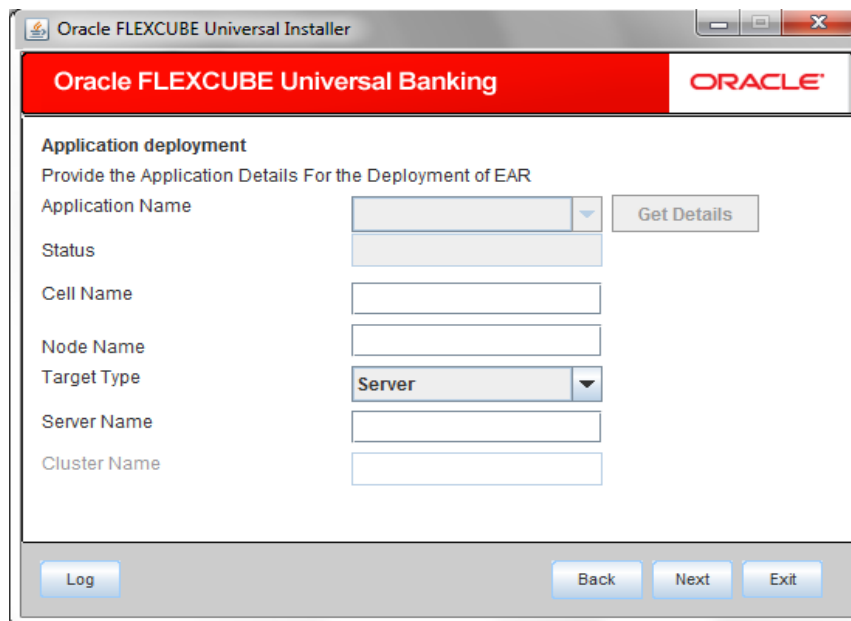
Application Context.

Application context gets displayed on selection of EAR path.

Manage Resources

Not Applicable for websphere application server.

12. Click 'Next' to display the screen below.



The screenshot shows the 'Oracle FLEXCUBE Universal Installer' window. The title bar reads 'Oracle FLEXCUBE Universal Installer'. The main window has a red header bar with 'Oracle FLEXCUBE Universal Banking' on the left and the 'ORACLE' logo on the right. Below the header, the section is titled 'Application deployment' with the instruction 'Provide the Application Details For the Deployment of EAR'. The form contains the following fields and controls:

- Application Name:** A text input field with a dropdown arrow on the right. A 'Get Details' button is positioned to the right of this field.
- Status:** A text input field.
- Cell Name:** A text input field.
- Node Name:** A text input field.
- Target Type:** A dropdown menu currently showing 'Server'.
- Server Name:** A text input field.
- Cluster Name:** A text input field.

At the bottom of the window, there are four buttons: 'Log', 'Back', 'Next', and 'Exit'.

13. Specify the following details:

Application Name

Not applicable for application full deployment.

Status

Not applicable for application full deployment.

Cell Name

Specify the appropriate cell name.

Node Name

Specify the appropriate node name.

Target Type


Select the appropriate target type.

Server Name

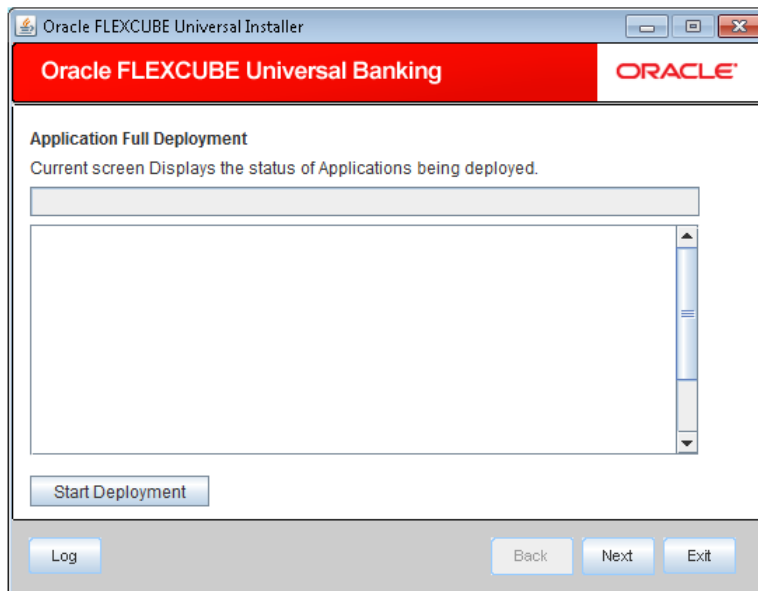
Specify the appropriate server name if the selected target type is 'Server'.

Cluster Name

Specify the appropriate cluster name if the selected target type is 'Cluster'.

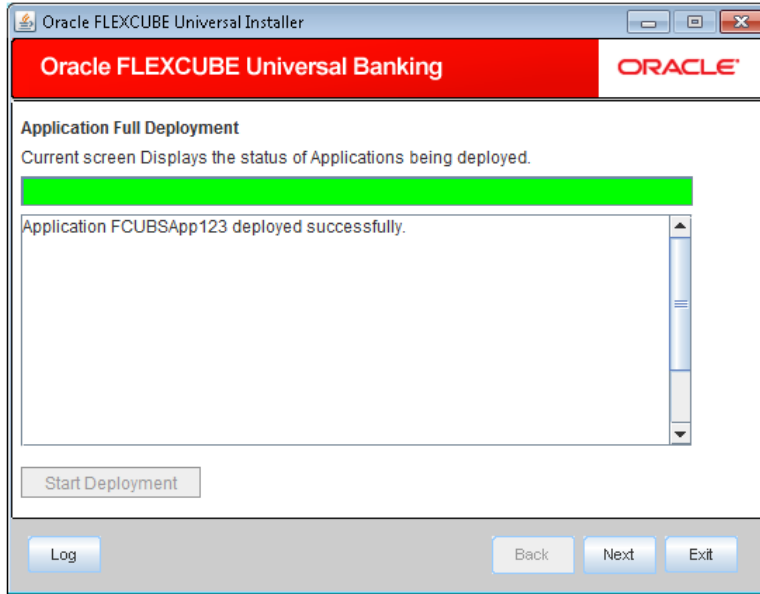
 The values fed in the above screen are not validated at the screen level as a result of a limitation and hence, Specify accurate information.

14. Click 'Next' to display the screen below.



15. Click 'Start Deployment' to begin the process of application deployment.

16. Click 'OK' for the pop up message and following screen is displayed:



Below additional configuration is required if the Scheduler EAR is deployed on a profile/server different from FCUBS EAR profile/server.

1. Create custom property in both FCUBS and Scheduler application servers.

In the administrative console, click Servers > Server Types > WebSphere application servers > server_name > Java and Process Management > Process definition > Java virtual machine > Custom properties > New.

On the Custom Properties settings page, define the custom property:

For Name, specify **com.ibm.websphere.orb.uniqueServerName**.

For Value, specify **true**.

Click OK.

Click Save on the console task bar.

Restart both application servers.

WebSphere, software Welcome websphere Help Logout [Close page](#)

Cell=ofss220137Node01Cell, Profile=AppSrv01

Application servers

[Application servers](#) > [server1](#) > [Process definition](#) > [Java Virtual Machine](#) > **Custom properties**

Use this page to specify an arbitrary name and value pair. The value that is specified for the name and value pair is a string that can set internal system configuration properties.

Preferences

New... Delete

Select	Name	Value	Description
<input type="checkbox"/>	com.ibm.security.iqss.debug	off	
<input type="checkbox"/>	com.ibm.security.krb5.Krb5Debug	off	
<input type="checkbox"/>	com.ibm.websphere.orb.uniqueServerName	true	

Total 3

Help

Field help
For field help information, select a field label or list marker when the help cursor is displayed.

Page help
[More information about this page](#)

Command Assistance
[View administrative scripting command for last action](#)

2. Change the transport type under the CSiv2 Transport Layer to SSL-Supported in FCUBS application server.

Click Security > Global Security > RMI/IOP Security > CSiv2 inbound communications.

Change the transport type under the CSiv2 Transport Layer to SSL-Supported. Repeat this step to configure CSiv2 outbound communications.

WebSphere, software Welcome websphere Help Logout [Close page](#)

Cell=ofss220137Node01Cell, Profile=AppSrv01

Global security

[Global security](#) > **CSiv2 inbound communications**

Use this panel to specify authentication settings for requests that are received and transport settings for connections that are accepted by this server using the Object Management Group (OMG) Common Secure Interoperability (CSI) authentication protocol.

CSiv2 Attribute Layer

☒ Propagate security attributes

☐ Use identity assertion

Trusted identities

CSiv2 Transport Layer

Client certificate authentication: Supported

Transport: **SSL-supported**

SSL settings

☒ Centrally managed
☐ Use specific SSL alias

[Manage endpoint security configurations](#)

[SSL configurations](#)

CSiv2 Message Layer

Message layer authentication: Supported

Allow client to server authentication with:

☐ Kerberos

☒ LTPA

☒ Basic authentication

Additional Properties

Login configuration: RMI_INBOUND

Related Items

[Trusted authentication realms - inbound](#)

Apply OK Reset Cancel

Help

Field help
For field help information, select a field label or list marker when the help cursor is displayed.

Page help
[More information about this page](#)

Command Assistance
[View administrative scripting command for last action](#)

3. Generate EJB stub for ELCMEJB.jar and deploy it as shared library in Scheduler application server.

Steps to generate EJB stub.

1. Navigate to bin folder of application server.

Ex: /scratch/was/was855/IBM/WebSphere/AppServer/bin

2. Run createEJBStubs.sh from bin folder.

sh createEJBStubs.sh <Source EAR Path> -newfile <Destination Path>

Ex: sh createEJBStubs.sh

/scratch/work_area/DEV/UBSITR2/APPDEBUGS/FCUBSAppITR2.ear -newfile

/scratch/work_area/DEV/UBSITR2/APPDEBUGS/FCUBSAppITR2_STUB.ear

Above command generate the EJB stubs in destination path specified.

Extract the ELCMEJB.jar from destination and deploy it as shared library in Scheduler application server.

Steps to create and deploy shared library.

1. Click Environment > Shared libraries in the console navigation tree.
2. Select a shared library scope.
3. Click New.
4. Configure the shared library.

→Provide the name and description for shared library.

→Provide ELCMEJB.jar path in classpath.

Ex: /scratch/work_area/DEV/UBSITR2/ELCMEJB.jar

5. Click on Apply and Save.

WebSphere software

Welcome Help Logout

Cell=ofss220137Node02Cell, Profile=AppSrv02

View: All tasks

- Welcome
- Guided Activities
- Servers
 - Server Types
 - WebSphere application servers
 - WebSphere MQ servers
 - Web servers
- Applications
 - New Application
 - Application Types
 - WebSphere enterprise applications
 - Business-level applications
 - Assets
 - Global deployment settings
- Services
- Resources
- Security
 - Global security
 - Security domains
 - Administrative Authorization Groups
 - SSL certificate and key management
 - Security auditing
 - Bus security
- Environment
 - Virtual hosts
 - Update global Web server plug-in configuration
 - WebSphere variables
 - Shared libraries
 - SIP application routers
 - Replication domains
 - Naming
 - OSGi bundle repositories
- System administration
- Users and Groups

Shared Libraries

Shared Libraries > New...

Use this page to define a container-wide shared library that can be used by deployed applications.

Configuration

General Properties

Scope

cells:ofss220137Node02Cell:nodes:ofss220137Node02:servers:server1

Name

ELCMEJB

Description

ELCMEJB

Classpath

/scratch/work_area/DEV/UBSITR2/ELCMEJB.jar

Native Library Path

Class Loading

☐ Use an isolated class loader for this shared library

Apply OK Reset Cancel

Field help
For field help information select a field label or list marker when the help cursor is displayed.

Page help
[More information about this page](#)

WebSphere software

Welcome Help Logout

Cell=ofss220137Node02Cell, Profile=AppSrv02

View: All tasks

- Welcome
- Guided Activities
- Servers
 - Server Types
 - WebSphere application servers
 - WebSphere MQ servers
 - Web servers
- Applications
 - New Application
 - Application Types
 - WebSphere enterprise applications
 - Business-level applications
 - Assets
 - Global deployment settings
- Services
- Resources
- Security
 - Global security
 - Security domains
 - Administrative Authorization Groups
 - SSL certificate and key management
 - Security auditing
 - Bus security
- Environment
 - Virtual hosts
 - Update global Web server plug-in configuration
 - WebSphere variables
 - Shared libraries
 - SIP application routers
 - Replication domains
 - Naming
 - OSGi bundle repositories
- System administration
- Users and Groups

Shared Libraries

Shared Libraries

Use this page to define a container-wide shared library that can be used by deployed applications.

Scope: Cell=ofss220137Node02Cell, Node=ofss220137Node02, Server=server1

Scope specifies the level at which the resource definition is visible. For detailed information on what scope is and how it works, [see the scope settings help](#).

Node=ofss220137Node02, Server=server1

Preferences

New... Delete

Select	Name	Description
<input type="checkbox"/>	ELCMEJB	ELCMEJB

You can administer the following resources:

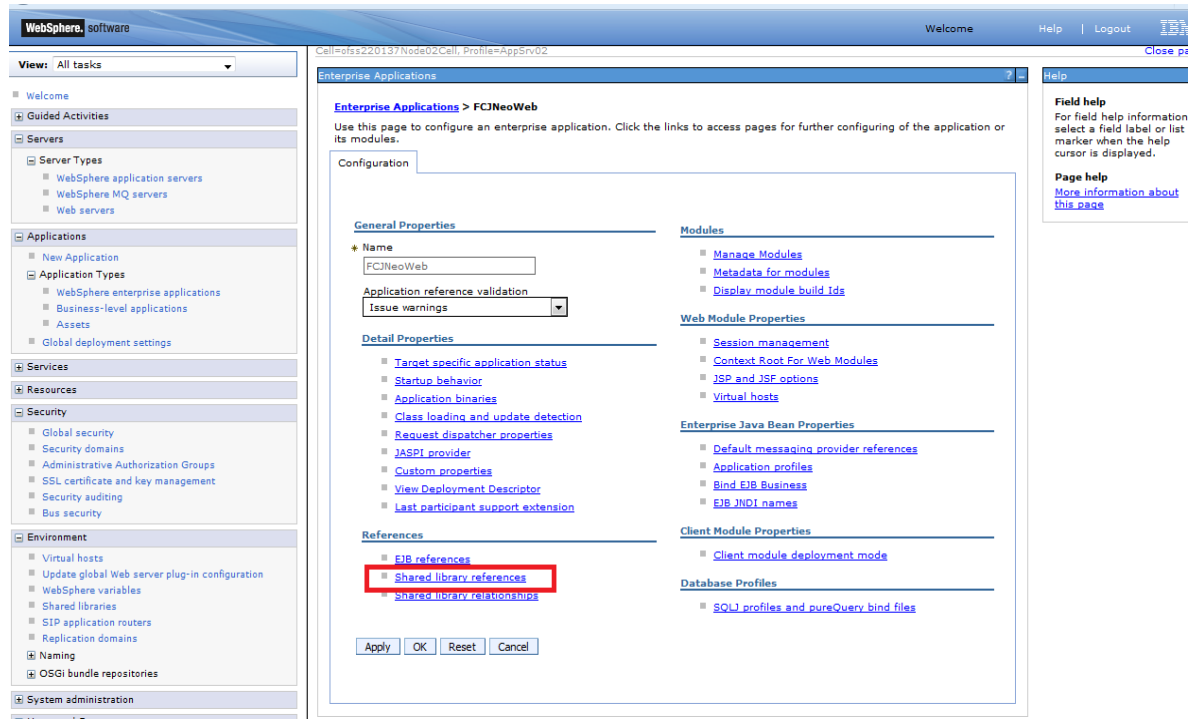
Total 1

Field help
For field help information select a field label or list marker when the help cursor is displayed.

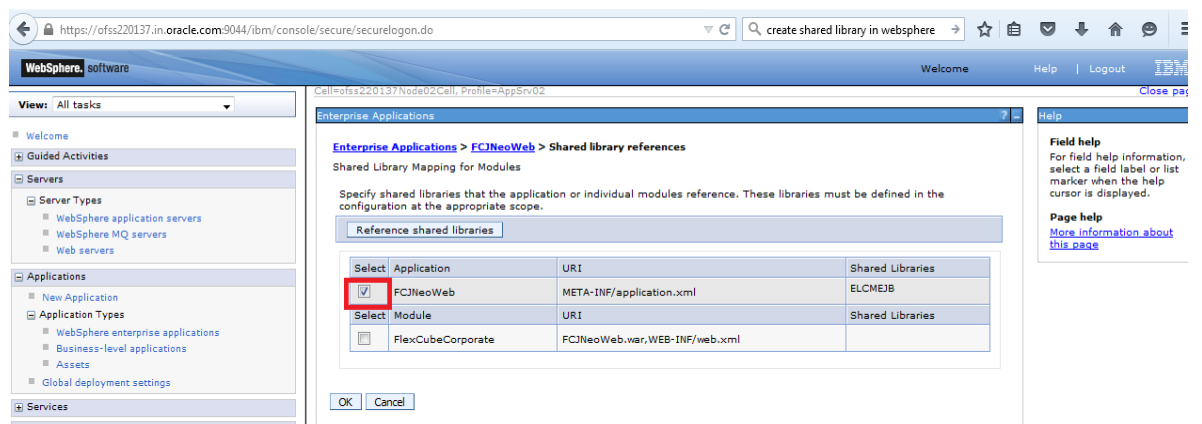
Page help
[More information about this page](#)

Command Assistance
[View administrative scripting command for this action](#)

- Click Applications > Application Types > WebSphere enterprise applications > *application_name* > Shared library references in the console navigation tree to access the Shared library references page.



7. On the Shared library references page, select an application or module to which you want to associate a shared library.



8. Click Reference shared libraries.
9. On the Shared library mapping page, select ELCMEJB.jar in the Available list, click >> to add them to the Selected list, and click OK.

WebSphere software

Cell=cs220137Node02Cell, Profile=AppSvc02

Welcome Help Logout

View: All tasks

- Welcome
- Guided Activities
- Servers
 - Server Types
 - WebSphere application servers
 - WebSphere MQ servers
 - Web servers
- Applications
 - New Application
 - Application Types
 - WebSphere enterprise applications
 - Business-level applications
 - Assets
 - Global deployment settings
- Services
- Resources
- Security
 - Global security
 - Security domains
 - Administrative Authorization Groups
 - SSL certificate and key management
 - Security auditing
 - Bus security
- Environment
 - Virtual hosts
 - Update global Web server plug-in configuration
 - WebSphere variables
 - Shared libraries
 - SIP application routers
 - Replication domains
 - Naming
 - OSGi bundle repositories
- System administration
- Monitoring and Troubleshooting

Enterprise Applications > FCJNeoWeb > Shared library references > Shared Library Mapping

Map shared libraries to an entire application or to one or more modules.

Map libraries to the application or module listed

FCJNeoWeb

Select the library in the Available list. Move it to the Selected list by clicking >>.

Available: [Empty list box]

Selected: ELCMEJB

New...

OK Cancel

Field help
For field help information select a field label or list marker when the help cursor is displayed.

Page help
[More information about this page](#)

10. Save the changes to the configuration and restart the application server.



Standalone Scheduler Application Deployment in Websphere
[May] [2020]
Version 12.87.06.0.0

Oracle Financial Services Software Limited
Oracle Park
Off Western Express Highway
Goregaon (East)
Mumbai, Maharashtra 400 063
India

Worldwide Inquiries:
Phone: +91 22 6718 3000
Fax: +91 22 6718 3001
www.oracle.com/financialservices/

Copyright © [2007], [2020], Oracle and/or its affiliates. All rights reserved.

Oracle and Java are registered trademarks of Oracle and/or its affiliates. Other names may be trademarks of their respective owners.

U.S. GOVERNMENT END USERS: Oracle programs, including any operating system, integrated software, any programs installed on the hardware, and/or documentation, delivered to U.S. Government end users are "commercial computer software" pursuant to the applicable Federal Acquisition Regulation and agency-specific supplemental regulations. As such, use, duplication, disclosure, modification, and adaptation of the programs, including any operating system, integrated software, any programs installed on the hardware, and/or documentation, shall be subject to license terms and license restrictions applicable to the programs. No other rights are granted to the U.S. Government.

This software or hardware is developed for general use in a variety of information management applications. It is not developed or intended for use in any inherently dangerous applications, including applications that may create a risk of personal injury. If you use this software or hardware in dangerous applications, then you shall be responsible to take all appropriate failsafe, backup, redundancy, and other measures to ensure its safe use. Oracle Corporation and its affiliates disclaim any liability for any damages caused by use of this software or hardware in dangerous applications.

This software and related documentation are provided under a license agreement containing restrictions on use and disclosure and are protected by intellectual property laws. Except as expressly permitted in your license agreement or allowed by law, you may not use, copy, reproduce, translate, broadcast, modify, license, transmit, distribute, exhibit, perform, publish or display any part, in any form, or by any means. Reverse engineering, disassembly, or decompilation of this software, unless required by law for interoperability, is prohibited.

The information contained herein is subject to change without notice and is not warranted to be error-free. If you find any errors, please report them to us in writing.

This software or hardware and documentation may provide access to or information on content, products and services from third parties. Oracle Corporation and its affiliates are not responsible for and expressly disclaim all warranties of any kind with respect to third-party content, products, and services. Oracle Corporation and its affiliates will not be responsible for any loss, costs, or damages incurred due to your access to or use of third-party content, products, or services.